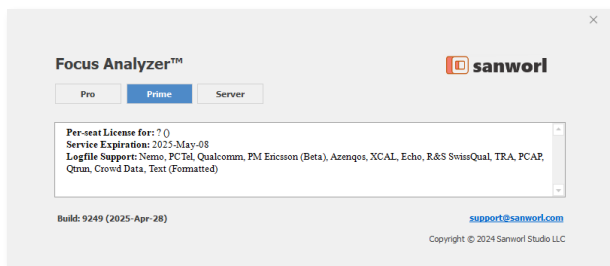




## Focus Analyzer

The tool stands as a versatile post-processing solution for mobile network testing, adeptly handling large volumes of log data. It features powerful optimization and troubleshooting capabilities, along with a highly adaptable auto-reporting feature that empowers users to effortlessly design and generate reports through intuitive drag-and-drop functionality.



## Technology

The tool offers extensive analysis support for multiple technologies, from 2G to 5G SA and NSA, as well as Wi-Fi and Bluetooth, in both Outdoor and Indoor environments.

## Log File Support

R&S SwissQual (SQC), Enhancell (ECHO), XCAL (AOF), Qtrun (JSON), PCTel (DTR), Qualcomm (DLF), Ookla (DRM), Nemo (NMF), AZENQOS (AZM), PCAP, Text (TXT, CSV, Excel)

## Terabyte Data

The tool excels in efficiently handling large log files and storing terabytes of data within a free open-source database-PostgreSQL.

## Data Management

The tool organizes data with a configurable hierarchy, allowing users to easily structure data according to different attributes, create flexible data streams, and analyze data at various levels. Its strong data filtering capabilities further accelerate the process, simplifying the refinement of specific data and streamline post-processing tasks.

The tool's private cloud platform is designed to handle even larger datasets by configuring even more than one cloud server with multiple database servers. This setup enables multi-location data

parallel processing, centralized data storage, and convenient cloud access.

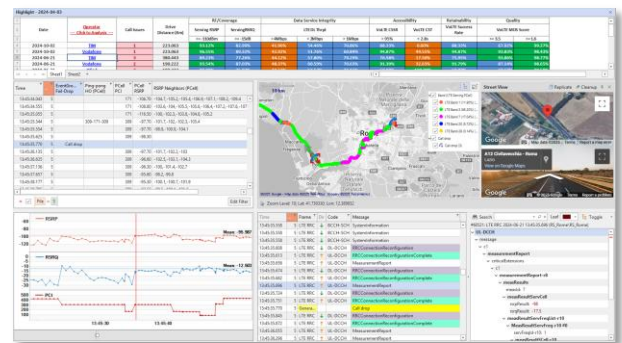
## Robust Suite of Features

The tool offers an extensive suite of data analysis and reporting features, including time-based views like Message View, Map View, Table View, and Time-series Chart, as well as statistical views such as Multi-dimensional View, Aggregation Chart, Gauge, Cell Coverage View, and Correlation Chart.

Statistical views enable analysis across any chosen dimensions, offering great flexibility for customized data insights.

## Analysis and Troubleshooting

This tool automatically detects common network issues with custom criteria and visualizes them on maps, tables, or charts, providing easy drill-down access to relevant details. Furthermore, the Root Cause Explorer editor empowers users to enhance root cause analysis with their own insights. Users can also design custom drill-down dashboards and apply them to datasets with a single click.



## Customized KPIs and Diagnosis

The embedded script development tool empowers advanced users to create custom KPIs and diagnostic insights by implementing their logic using C/C# programming language. Requiring only basic programming skills, this tool allows users to leverage all available measurement data, including Layer 3 messages, IP packets, and core traces. With it, users can automate personalized root cause analysis, issue detection, and remedy suggestions, streamlining complex diagnostics.

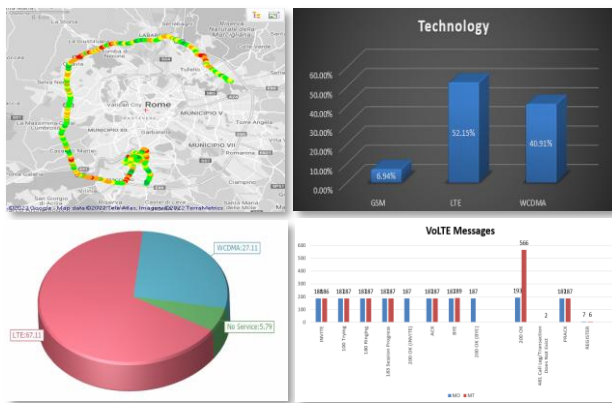
## Auto-reporting & Benchmarking

The tool includes a robust report template builder, enabling users to generate reports of varying complexity levels effortlessly through an intuitive drag-and-drop interface. Users have the flexibility to create simple reports featuring map views,

graphs, and statistical values, or more comprehensive reports encompassing SSV, Acceptance, Cluster, Management, Benchmark, Rollout, Parameter audits, and interference reports.

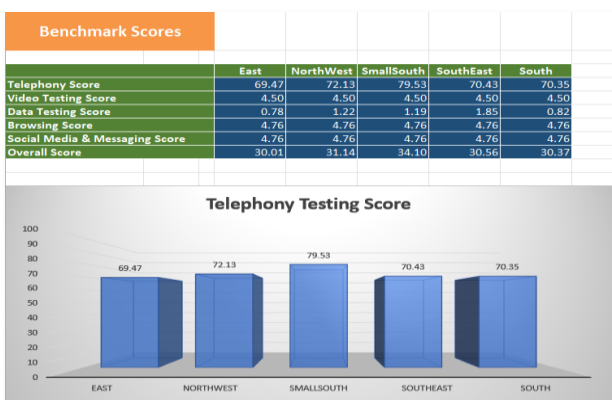
The tool automates reporting by segmenting data based on attributes such as technology, band, channel, cell ID, and operator, enabling the generation of individual or side-by-side reports.

Users can export reports in Excel, Word, PDF, PowerPoint, and HTML formats. Reports can also be automatically inserted into existing PowerPoint or Word files.



## Performance & Interactivity Score

The tool can calculate network performance and interactivity scores by either applying the industry-recommended methodology or defining a custom methodology with chosen KPIs and weights. It presents results in tables or charts to facilitate multi-dimensional comparisons. Moreover, it offers the capability to highlight the highest score on the Map View for easy reference.



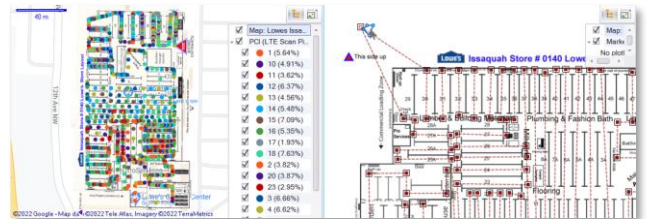
## Indoor and Outdoor Mapping

This tool offers extensive mapping features for both indoor and outdoor environments, including offline caching for outdoor maps. It also supports

the integration of digital images and floor plan photos.

Its built-in image rectifier simplifies geocoding floor plans with intuitive drag-and-drop functionality on the online outdoor map view, enabling seamless indoor floor plan overlays on outdoor maps.

Furthermore, it supports online map types like Google, Bing, and Open Street Map.



## Automation

From log file monitoring and processing to scheduled report generation, delivery, status notifications, and database maintenance, the entire workflow is fully customizable and automated. Once configured and scheduled, automation tasks operate autonomously around the clock, delivering status updates via email or text based on your schedule.

## Private Cloud and Web

The tool offers flexible deployment options:

- Standalone all-in-one Windows application
- Private Cloud platform for centralized and automated data processing and storage, facilitating remote concurrent access
- Integrated web-based interface for reporting, dashboards, scorecards, and lightweight data analysis.

## Low-cost Deployment

Utilizing a free, open-source database, the tool runs smoothly on standard Windows machines, eliminating the need for expensive hardware.

## Flexible Licensing

We offer competitively priced perpetual licenses and annual subscriptions.

Contact

[www.sanworl.com](http://www.sanworl.com)  
[info@sanworl.com](mailto:info@sanworl.com)

